

## DIRECTIONS TO KORYO TOURS OFFICE

Please DO NOT simply try to take a taxi direct to our office. The address will not be found by a driver. Instead ask to be taken to YAXIU MARKET (雅秀市场). This is a famous landmark in Beijing. It is in the Sanlitun area near to the Workers' Stadium and the Sanlitun Bar Street. Nearest Subway station is Tuanjiehu Station (about 15 mins walk to the East of YAXIU Market)

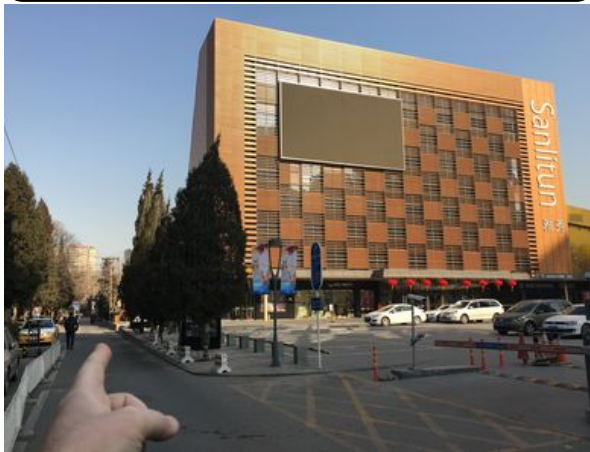
This sentence is Chinese for *'please take me to Sanlitun Yaxiu Market'* (for a taxi driver)

请带我去三里屯雅秀（不要去秀水市场！不是买东西！）。

This is *'excuse me, where is Yaxiu Market?'* (for if you are nearby but can't find it)

请告诉我三里屯雅秀怎么走？

1. This is Yaxiu Market (雅秀市场). Get out of the taxi and walk up this road.



2. On the left hand side (parallel with the front left corner of Yaxiu Market) is a small alley.



3. Walk through this gate into the housing compound. Walk straight ahead.



4. After 50m you will see our office signs on the left, go to the door and ring the bell – see you inside!

